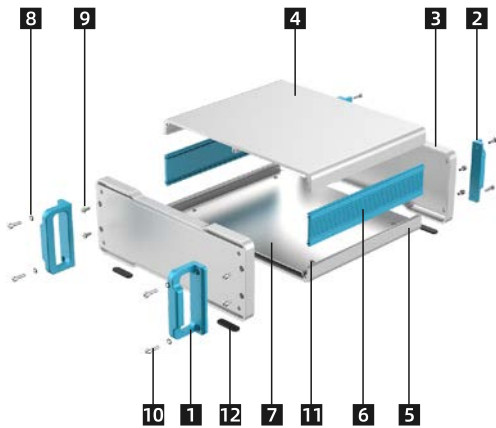
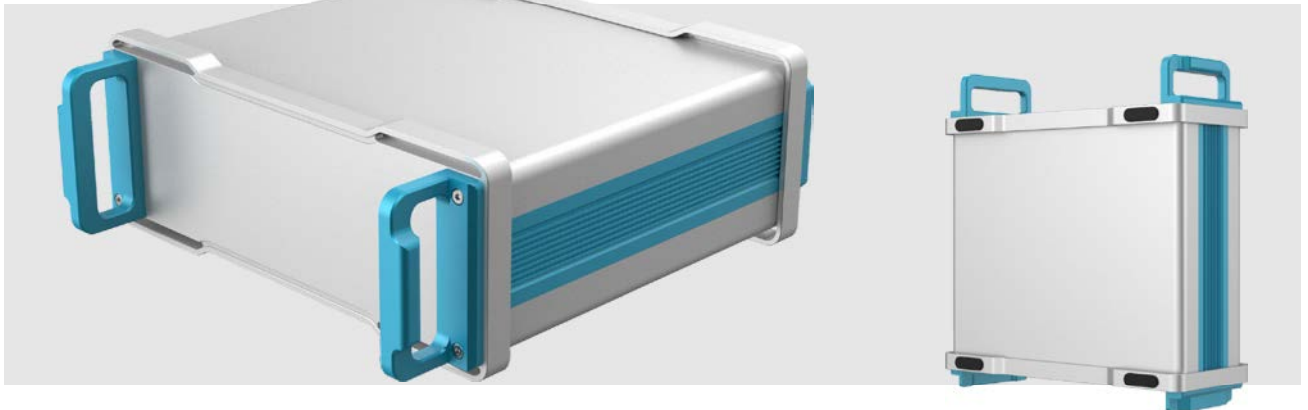


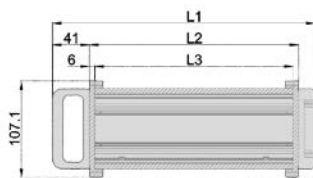


● YG-F01

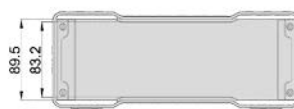


- 加厚后面板，可定制性强
Thicken front and rear panel, widely customization
- 模块化设计、高度、深度可灵活定制
Modular design, height and depth can be flexibly customized
- 结构简单，安装便捷
Simple structure and convenient installation
- 铝合金把手设计，坚固可靠，方便携带
Aluminum alloy handle design, sturdy and reliable, easy to carry
- 铝合金护脚设计，防磕碰
Aluminum alloy foot protection design to prevent bumps
- 底部采用防滑硅胶脚垫
Non-slip silicone feet at the bottom

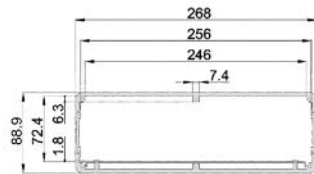
序号 S/N	组件 Description	数量 pcs	材料 Material	颜色/表面处理 Color / Finish
1	拉手Handle	2	AL 5052-H32	喷砂翠蓝Sandblasting Light Blue
2	后防护条Rear Protecting Part	2	AL 5052-H32	喷砂翠蓝Sandblasting Light Blue
3	前后面板Front/ Rear Panel	2	AL 5052-H32	喷砂银白Sandblasting Silver
4	上盖板Upper cover	1	AL 6063-T5	喷砂银白Sandblasting Silver
5	下盖板Bottom Cover	1	AL 6063-T5	喷砂银白Sandblasting Silver
6	侧板Side Panel	2	AL 6063-T5	喷砂翠蓝Sandblasting Light Blue
7	垫板Fixing Panel	1	AL 5052-H32	/
8	防松垫圈M4Check washerM4	4	SUS 304	/
9	内六角杯头螺丝M4X8 Hexagon socket head cap screwsM4X8	8	SUS 304	/
10	内六角杯头螺丝M4X14 Hexagon socket head cap screwsM4X14	8	SUS 304	/
11	十字大扁头螺丝M3X4 Crosss Recessed Mushroom ScrewsM3X4	4	碳钢Carbon steel	镀白镍White nickel plating
12	自粘胶垫Rubber Pad	4	硅胶 Silicone rubber	黑色Black



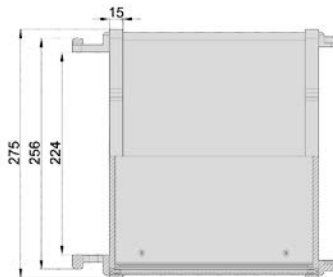
左视图



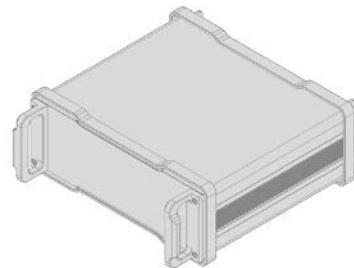
正视图



截面图



上视图



型号S/N	L1	L2	L3	重量/KG
F01-0001	291	232	220	3.23
F01-0003	371	312	300	3.958

● **DETAILS**
细节展示



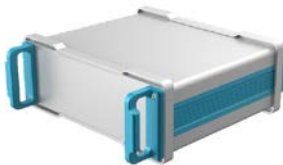
各面板开孔自由定制
Free customization of each panel cutouts

拱桥元素机脚设计，优雅与实用兼备
Arch bridge element machine foot design, elegant and practical



开孔定制，激光打标，定制丝印
Customization: cutouts, laser printing and silkscreen

● **COLORING SCHEME**
配色方案



(备货颜色 Stock color)



喷砂银白
Sandblasting Silver



喷砂翠蓝
Sandblasting Light Blue



喷砂银白
Sandblasting Silver



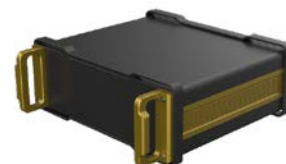
喷砂黑色
Sandblasting Black



喷砂铁灰
Sandblasting Gray



喷砂黑色
Sandblasting Black



喷砂黑色
Sandblasting Black



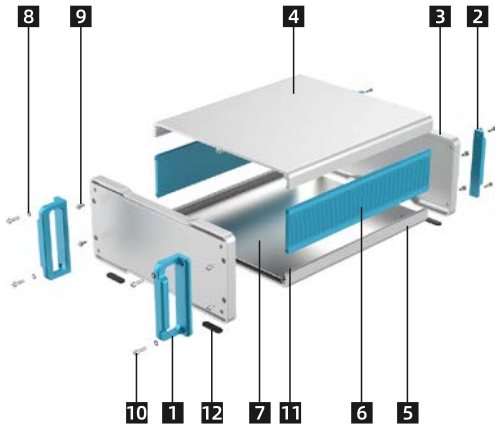
喷砂金黄
Sandblasting Golden



www.yg-enclosure.com/ www.yonggu-enclosure.com
广东永固电子机械科技有限公司
Guangdong YONGU Electronic Machinery Technology Co., Ltd.
✉️ ducati@yonggu-enclosure.com
🏭 生产中心: 广东省江门市鹤城镇鹤翔中路32号 (自编14座)
No. 32, Hexiang Middle Road, Hecheng Town, Jiangmen City, Guangdong Province (14 self-edited)
🏢 总部: 广东省佛山市南海区大沥镇岭南南路75号伟业国际大厦
24th Floor, Weiye International Building, NO.75 Lingnan Road, Dali Town, Nanhai District, Foshan City, Guangdong Province, China

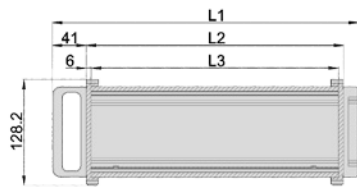


● YG-F02

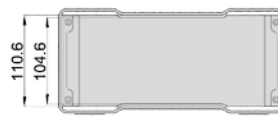


- 加厚后面板，可定制性强
Thicken front and rear panel, widely customization
- 模块化设计、高度、深度可灵活定制
Modular design, height and depth can be flexibly customized
- 结构简单，安装便捷
Simple structure and convenient installation
- 铝合金把手设计，坚固可靠，方便携带
Aluminum alloy handle design, sturdy and reliable, easy to carry
- 铝合金护脚设计，防磕碰
Aluminum alloy foot protection design to prevent bumps
- 底部采用防滑硅胶脚垫
Non-slip silicone feet at the bottom

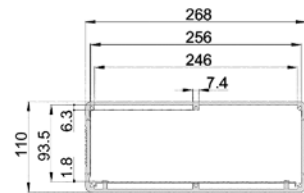
序号 S/N	组件 Description	数量 pcs	材料 Material	颜色/表面处理 Color / Finish
1	拉手 Handle	2	AL 5052-H32	喷砂翠蓝 Sandblasting Light Blue
2	后防护条 Rear Protecting Part	2	AL 5052-H32	喷砂翠蓝 Sandblasting Light Blue
3	前后面板 Front/Rear Panel	2	AL 5052-H32	喷砂银白 Sandblasting Silver
4	上盖板 Upper cover	1	AL 6063-T5	喷砂银白 Sandblasting Silver
5	下盖板 Bottom Cover	1	AL 6063-T5	喷砂银白 Sandblasting Silver
6	侧板 Side Panel	2	AL 6063-T5	喷砂翠蓝 Sandblasting Light Blue
7	垫板 Fixing Panel	1	AL 5052-H32	/
8	防松垫圈 M4 Check washer M4	4	SUS 304	/
9	内六角杯头螺丝 M4X8	8	SUS 304	/
10	内六角杯头螺丝 M4X14	8	SUS 304	/
11	十字大扁头螺丝 M3X4	4	碳钢 Carbon steel	镀白镍 White nickel plating
12	自粘胶垫 Rubber Pad	4	硅胶 Silicone rubber	黑色 Black



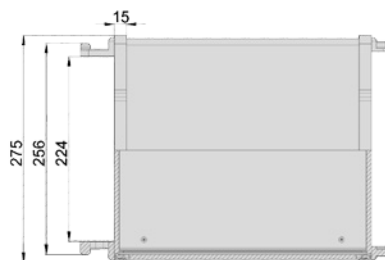
左视图



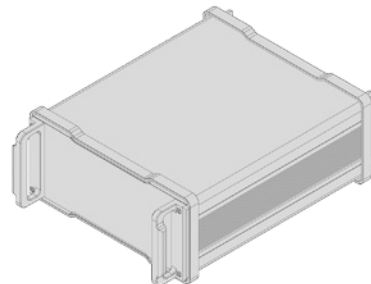
正视图



截面图



上视图



型号 S/N	L1	L2	L3	重量/KG
F02-0006	371	312	300	4.493

● DETGAILS 细节展示



各面板开孔自由定制
Free customization of each
panel cutouts

拱桥元素机脚设计，优雅与实用兼备
Arch bridge element machine foot design,
elegant and practical



开孔定制，激光打标，定制丝印
Customization: cutouts, laser
printing and silkscreen

● COLORING SCHEME 配色方案



(备货颜色 Stock color)



喷砂银白
Sandblasting Silver



喷砂翠蓝
Sandblasting
Light Blue



喷砂银白
Sandblasting Silver



喷砂黑色
Sandblasting Black



喷砂铁灰
Sandblasting Gray



喷砂黑色
Sandblasting Black



喷砂黑色
Sandblasting Black



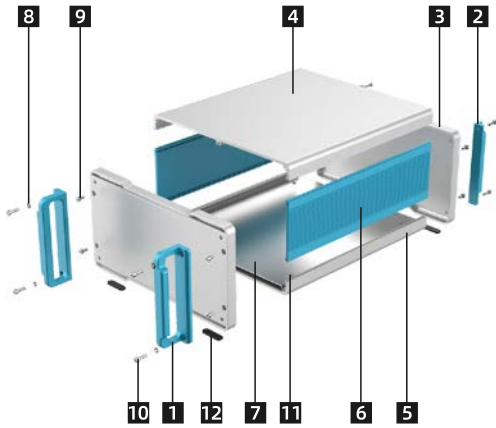
喷砂金黄
Sandblasting Golden



www.yg-enclosure.com/ www.yonggu-enclosure.com
广东永锢电子机械科技有限公司
Guangdong YONGU Electronic Machinery Technology Co., Ltd.
✉️ ducati@yonggu-enclosure.com
🏭 生产中心: 广东省江门市鹤城镇鹤翔中路32号 (自编14座)
No. 32, Hexiang Middle Road, Hecheng Town, Jiangmen City,
Guangdong Province (14 self-edited)
🏢 总部: 广东省佛山市南海区大沥镇岭南南路75号伟业国际大厦
24th Floor, Weiye International Building, NO.75 Lingnan Road,
Dali Town, Nanhai District, Foshan City, Guangdong Province, China

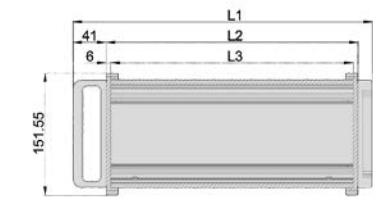


● YG-F03

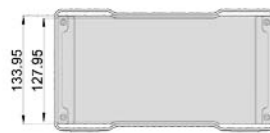


- 加厚后面板，可定制性强
Thicken front and rear panel, widely customization
- 模块化设计、高度、深度可灵活定制
Modular design, height and depth can be flexibly customized
- 结构简单，安装便捷
Simple structure and convenient installation
- 铝合金把手设计，坚固可靠，方便携带
Aluminum alloy handle design, sturdy and reliable, easy to carry
- 铝合金护脚设计，防磕碰
Aluminum alloy foot protection design to prevent bumps
- 底部采用防滑硅胶脚垫
Non-slip silicone feet at the bottom

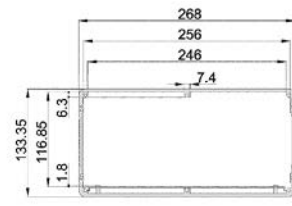
序号 S/N	组件 Description	数量 pcs	材料 Material	颜色/表面处理 Color / Finish
1	拉手 Handle	2	AL 5052-H32	喷砂翠蓝 Sandblasting Light Blue
2	后防护条 Rear Protecting Part	2	AL 5052-H32	喷砂翠蓝 Sandblasting Light Blue
3	前后面板 Front/Rear Panel	2	AL 5052-H32	喷砂银白 Sandblasting Silver
4	上盖板 Upper cover	1	AL 6063-T5	喷砂银白 Sandblasting Silver
5	下盖板 Bottom Cover	1	AL 6063-T5	喷砂银白 Sandblasting Silver
6	侧板 Side Panel	2	AL 6063-T5	喷砂翠蓝 Sandblasting Light Blue
7	垫板 Fixing Panel	1	AL 5052-H32	/
8	防松垫圈 M4 Check washer M4	4	SUS 304	/
9	内六角杯头螺丝 M4X8	8	SUS 304	/
10	内六角杯头螺丝 M4X14	8	SUS 304	/
11	十字大扁头螺丝 M3X4	4	碳钢 Carbon steel	镀白镍 White nickel plating
12	自粘胶垫 Rubber Pad	4	硅胶 Silicone rubber	黑色 Black



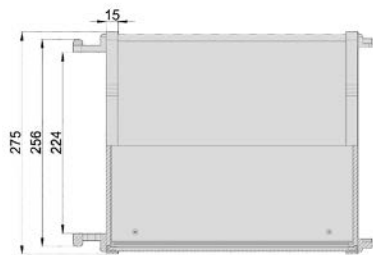
左视图



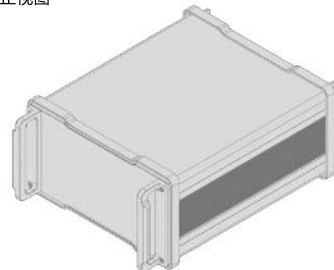
正视图



截面图



上视图



型号 S/N	L1	L2	L3	重量/KG
F03-0002	371	312	300	4.777
F03-0003	401	342	330	5.073

● DETGAILS 细节展示



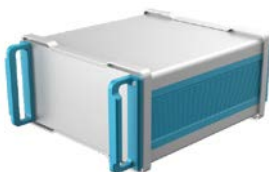
各面板开孔自由定制
Free customization of each panel cutouts

拱桥元素机脚设计，优雅与实用兼备
Arch bridge element machine foot design, elegant and practical



开孔定制，激光打标，定制丝印
Customization: cutouts, laser printing and silkscreen

● COLORING SCHEME 配色方案



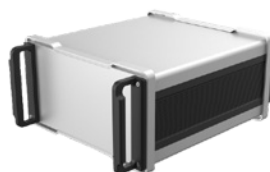
(备货颜色 Stock color)



喷砂银白
Sandblasting Silver



喷砂翠蓝
Sandblasting Light Blue



喷砂银白
Sandblasting Silver



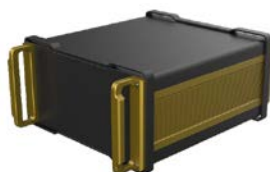
喷砂黑色
Sandblasting Black



喷砂铁灰
Sandblasting Gray



喷砂黑色
Sandblasting Black



喷砂黑色
Sandblasting Black



喷砂金黄
Sandblasting Golden

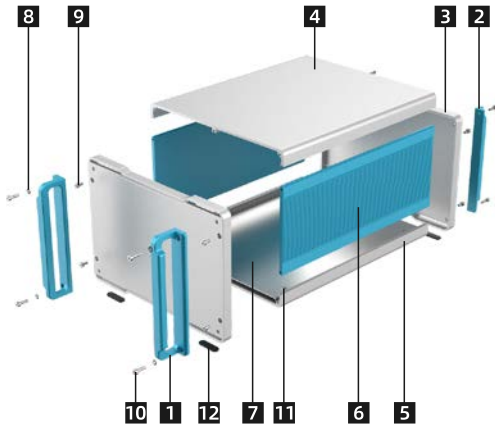
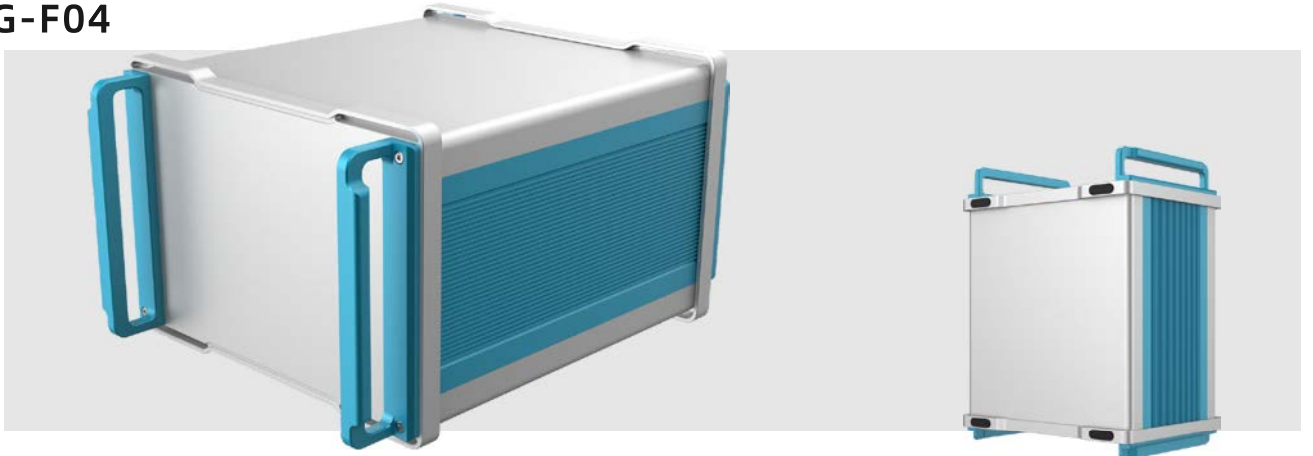


www.yg-enclosure.com/ www.yonggu-enclosure.com
广东永锢电子机械科技有限公司
Guangdong YONGU Electronic Machinery Technology Co., Ltd.
✉️ ducati@yonggu-enclosure.com
🏭 生产中心: 广东省江门市鹤城镇鹤翔中路32号 (自编14座)
No. 32, Hexiang Middle Road, Hecheng Town, Jiangmen City,
Guangdong Province (14 self-edited)
总部: 广东省佛山市南海区大沥镇岭南南路75号伟业国际大厦
24th Floor, Weiye International Building, NO.75 Lingnan Road,
Dali Town, Nanhai District, Foshan City, Guangdong Province, China



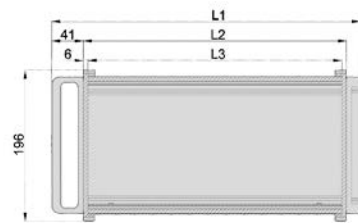
YONGU
-F series
Instrument Chassis

YG-F04

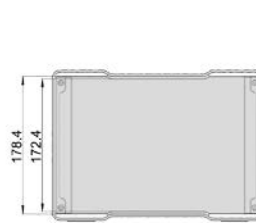


- 加厚后面板，可定制性强
Thicken front and rear panel, widely customization
- 模块化设计、高度、深度可灵活定制
Modular design, height and depth can be flexibly customized
- 结构简单，安装便捷
Simple structure and convenient installation
- 铝合金把手设计，坚固可靠，方便携带
Aluminum alloy handle design, sturdy and reliable, easy to carry
- 铝合金护脚设计，防磕碰
Aluminum alloy foot protection design to prevent bumps
- 底部采用防滑硅胶脚垫
Non-slip silicone feet at the bottom

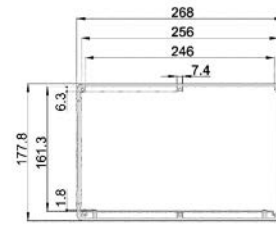
序号 S/N	组件 Description	数量 pcs	材料 Material	颜色/表面处理 Color / Finish
1	拉手 Handle	2	AL 5052-H32	喷砂翠蓝 Sandblasting Light Blue
2	后防护条 Rear Protecting Part	2	AL 5052-H32	喷砂翠蓝 Sandblasting Light Blue
3	前后面板 Front/Rear Panel	2	AL 5052-H32	喷砂银白 Sandblasting Silver
4	上盖板 Upper cover	1	AL 6063-T5	喷砂银白 Sandblasting Silver
5	下盖板 Bottom Cover	1	AL 6063-T5	喷砂银白 Sandblasting Silver
6	侧板 Side Panel	2	AL 6063-T5	喷砂翠蓝 Sandblasting Light Blue
7	垫板 Fixing Panel	1	AL 5052-H32	/
8	防松垫圈 M4 Check washer M4	4	SUS 304	/
9	内六角杯头螺丝 M4X8	8	SUS 304	/
10	内六角杯头螺丝 M4X14	8	SUS 304	/
11	十字大扁头螺丝 M3X4	4	碳钢 Carbon steel	镀白镍 White nickel plating
12	自粘胶垫 Rubber Pad	4	硅胶 Silicone rubber	黑色 Black



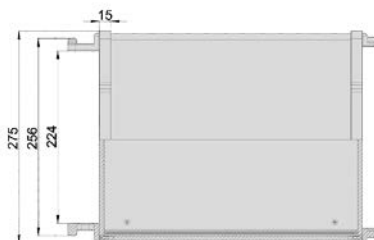
左视图



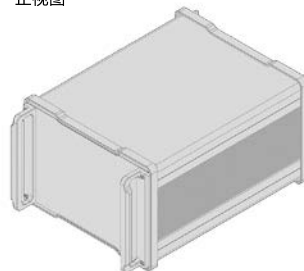
正视图



截面图

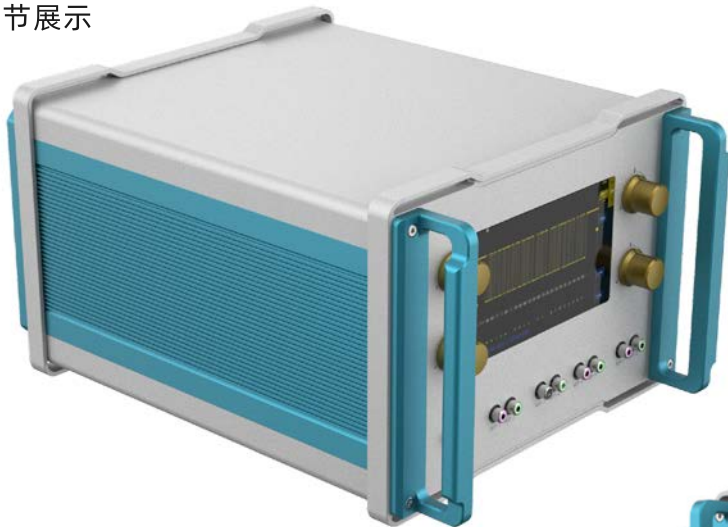


上视图



型号 S/N	L1	L2	L3	重量/KG
F04-0006	401	342	330	6.265

● DETGAILS 细节展示



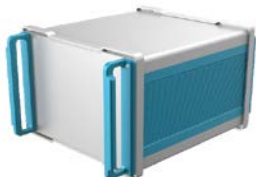
各面板开孔自由定制
Free customization of each panel cutouts

拱桥元素机脚设计，优雅与实用兼备
Arch bridge element machine foot design, elegant and practical



开孔定制，激光打标，定制丝印
Customization: cutouts, laser printing and silkscreen

● COLORING SCHEME 配色方案



(备货颜色 Stock color)



喷砂银白
Sandblasting Silver



喷砂翠蓝
Sandblasting Light Blue



喷砂银白
Sandblasting Silver



喷砂黑色
Sandblasting Black



喷砂铁灰
Sandblasting Gray



喷砂黑色
Sandblasting Black



喷砂黑色
Sandblasting Black



喷砂金黄
Sandblasting Golden

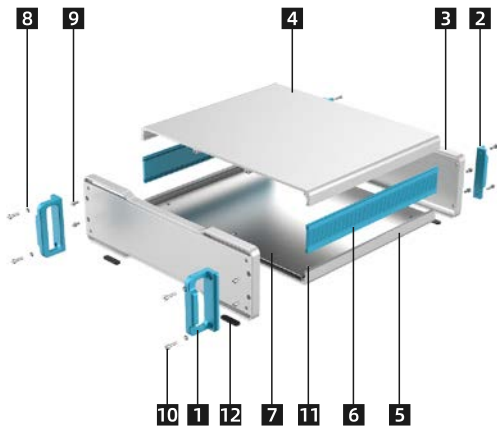
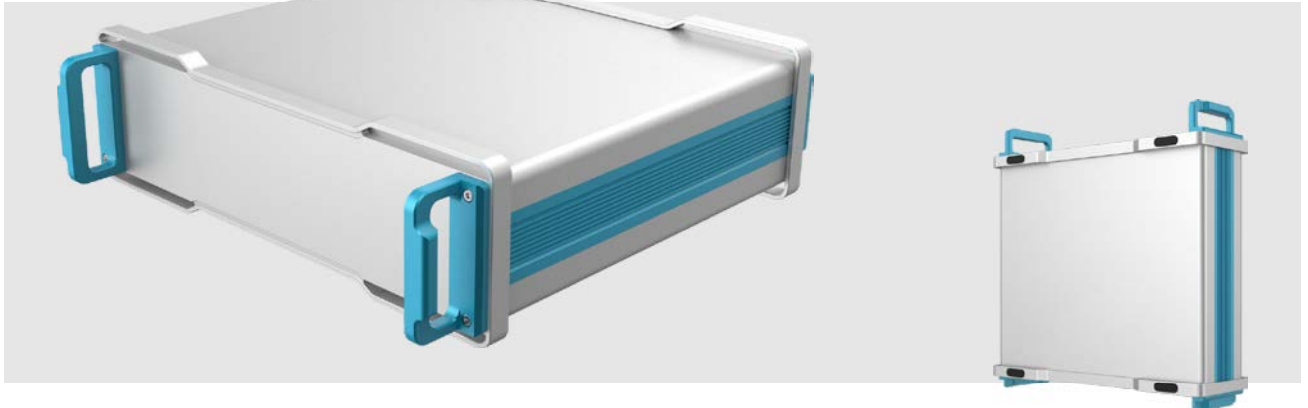


www.yg-enclosure.com/ www.yonggu-enclosure.com
广东永锢电子机械科技有限公司
Guangdong YONGU Electronic Machinery Technology Co., Ltd.
✉️ ducati@yonggu-enclosure.com
🏭 生产中心: 广东省江门市鹤城镇鹤翔中路32号 (自编14座)
No. 32, Hexiang Middle Road, Hecheng Town, Jiangmen City, Guangdong Province (14 self-edited)
🏢 总部: 广东省佛山市南海区大沥镇岭南南路75号伟业国际大厦
24th Floor, Weiye International Building, NO.75 Lingnan Road, Dali Town, Nanhai District, Foshan City, Guangdong Province, China



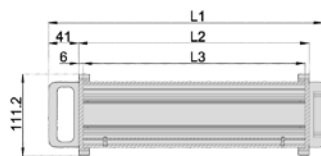
YONGU
-F series
Instrument Chassis

YG-F05



- 加厚后面板，可定制性强
Thicken front and rear panel, widely customization
- 模块化设计、高度、深度可灵活定制
Modular design, height and depth can be flexibly customized
- 结构简单，安装便捷
Simple structure and convenient installation
- 铝合金把手设计，坚固可靠，方便携带
Aluminum alloy handle design, sturdy and reliable, easy to carry
- 铝合金护脚设计，防磕碰
Aluminum alloy foot protection design to prevent bumps
- 底部采用防滑硅胶脚垫
Non-slip silicone feet at the bottom

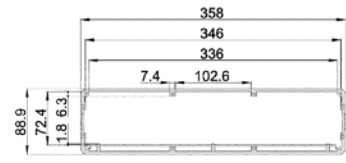
序号 S/N	组件 Description	数量 pcs	材料 Material	颜色/表面处理 Color / Finish
1	拉手 Handle	2	AL 5052-H32	喷砂翠蓝 Sandblasting Light Blue
2	后防护条 Rear Protecting Part	2	AL 5052-H32	喷砂翠蓝 Sandblasting Light Blue
3	前后面板 Front/Rear Panel	2	AL 5052-H32	喷砂银白 Sandblasting Silver
4	上盖板 Upper cover	1	AL 6063-T5	喷砂银白 Sandblasting Silver
5	下盖板 Bottom Cover	1	AL 6063-T5	喷砂银白 Sandblasting Silver
6	侧板 Side Panel	2	AL 6063-T5	喷砂翠蓝 Sandblasting Light Blue
7	垫板 Fixing Panel	1	AL 5052-H32	/
8	防松垫圈 M4 Check washer M4	4	SUS 304	/
9	内六角杯头螺丝 M4X8	8	SUS 304	/
10	内六角杯头螺丝 M4X14	8	SUS 304	/
11	十字大扁头螺丝 M3X4	6	碳钢 Carbon steel	镀白镍 White nickel plating
12	自粘胶垫 Rubber Pad	4	硅橡胶 Silicone rubber	黑色 Black



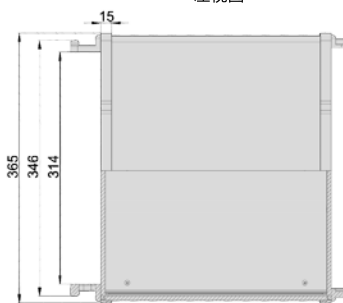
左视图



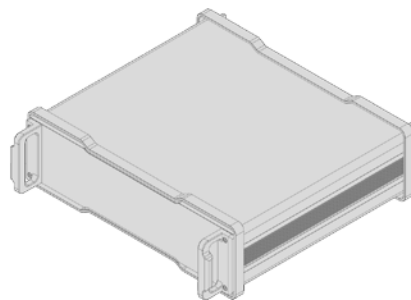
正视图



截面图



上视图



型号 S/N	L1	L2	L3	重量/KG
F05-0001	371	312	300	5.015
F05-0003	451	392	380	5.948

● DETGAILS 细节展示



各面板开孔自由定制
Free customization of each panel cutouts

拱桥元素机脚设计，优雅与实用兼备
Arch bridge element machine foot design, elegant and practical



开孔定制，激光打标，定制丝印
Customization: cutouts, laser printing and silkscreen

● COLORING SCHEME 配色方案



(备货颜色 Stock color)



喷砂银白
Sandblasting Silver



喷砂翠蓝
Sandblasting Light Blue



喷砂银白
Sandblasting Silver



喷砂黑色
Sandblasting Black



喷砂铁灰
Sandblasting Iron Gray



喷砂黑色
Sandblasting Black



喷砂黑色
Sandblasting Black



喷砂金黄
Sandblasting Golden

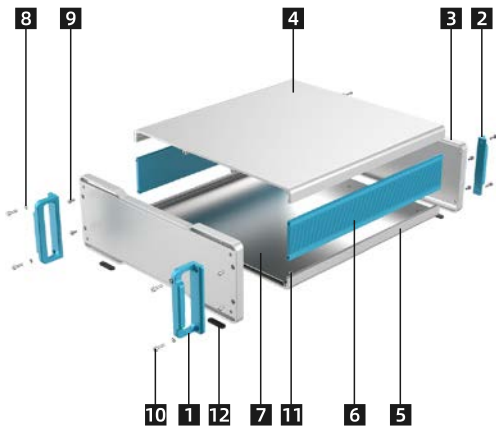
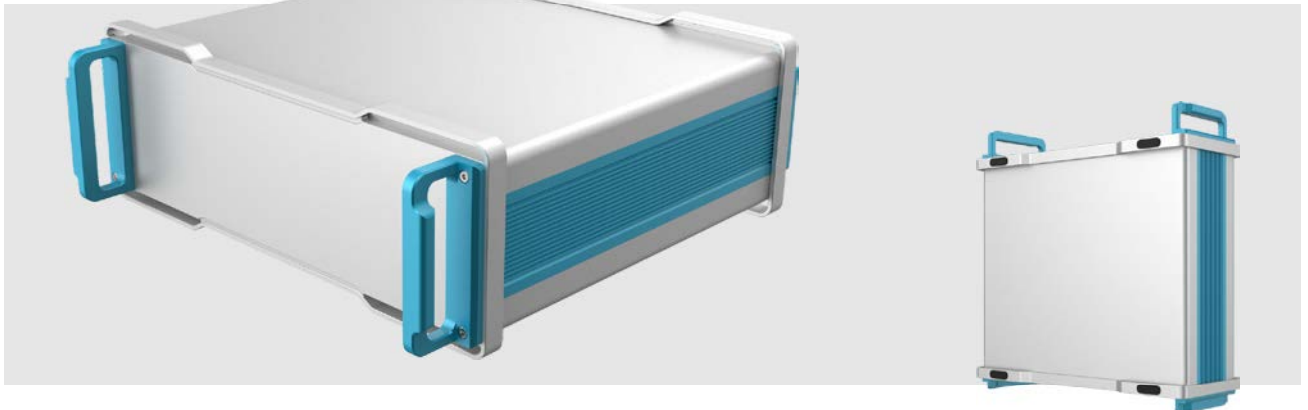


www.yg-enclosure.com/ www.yonggu-enclosure.com
广东永锢电子机械科技有限公司
Guangdong YONGU Electronic Machinery Technology Co., Ltd.
✉️ ducati@yonggu-enclosure.com
📍 生产中心: 广东省江门市鹤城镇鹤翔中路32号 (自编14座)
No. 32, Hexiang Middle Road, Hecheng Town, Jiangmen City,
Guangdong Province (14 self-edited)
总部: 广东省佛山市南海区大沥镇岭南南路75号伟业国际大厦
24th Floor, Weiye International Building, NO.75 Lingnan Road,
Dali Town, Nanhai District, Foshan City, Guangdong Province, China



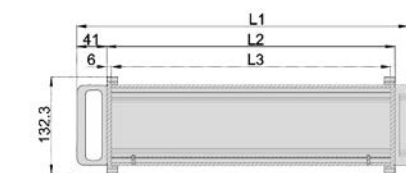
YONGU
-F series
Instrument Chassis

YG-F06

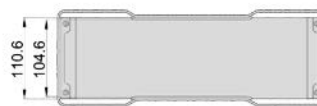


- 加厚后面板，可定制性强
Thicken front and rear panel, widely customization
- 模块化设计、高度、深度可灵活定制
Modular design, height and depth can be flexibly customized
- 结构简单，安装便捷
Simple structure and convenient installation
- 铝合金把手设计，坚固可靠，方便携带
Aluminum alloy handle design, sturdy and reliable, easy to carry
- 铝合金护脚设计，防磕碰
Aluminum alloy foot protection design to prevent bumps
- 底部采用防滑硅胶脚垫
Non-slip silicone feet at the bottom

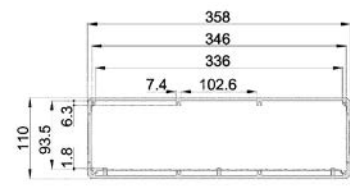
序号 S/N	组件 Description	数量 pcs	材料 Material	颜色/表面处理 Color / Finish
1	拉手 Handle	2	AL 5052-H32	喷砂翠蓝 Sandblasting Light Blue
2	后防护条 Rear Protecting Part	2	AL 5052-H32	喷砂翠蓝 Sandblasting Light Blue
3	前后面板 Front/Rear Panel	2	AL 5052-H32	喷砂银白 Sandblasting Silver
4	上盖板 Upper cover	1	AL 6063-T5	喷砂银白 Sandblasting Silver
5	下盖板 Bottom Cover	1	AL 6063-T5	喷砂银白 Sandblasting Silver
6	侧板 Side Panel	2	AL 6063-T5	喷砂翠蓝 Sandblasting Light Blue
7	垫板 Fixing Panel	1	AL 5052-H32	/
8	防松垫圈 M4 Check washer M4	4	SUS 304	/
9	内六角杯头螺丝 M4X8	8	SUS 304	/
10	内六角杯头螺丝 M4X14	8	SUS 304	/
11	十字大扁头螺丝 M3X4	6	碳钢 Carbon steel	镀白镍 White nickel plating
12	自粘胶垫 Rubber Pad	4	硅橡胶 Silicone rubber	黑色 Black



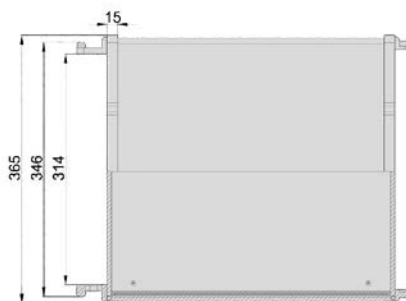
左视图



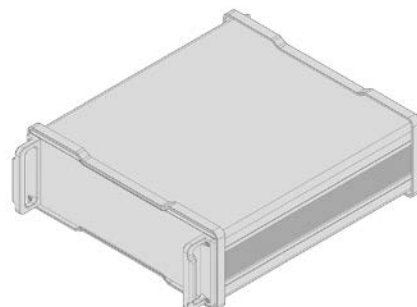
正视图



截面图



上视图



型号 S/N	L1	L2	L3	重量/KG
F06-0006	451	392	380	6.619

DETAILS
细节展示



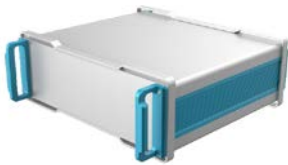
各面板开孔自由定制
Free customization of each panel cutouts

拱桥元素机脚设计，优雅与实用兼备
Arch bridge element machine foot design, elegant and practical



开孔定制，激光打标，定制丝印
Customization: cutouts, laser printing and silkscreen

COLORING SCHEME
配色方案



(备货颜色 Stock color)



喷砂银白
Sandblasting Silver



喷砂翠蓝
Sandblasting Light Blue



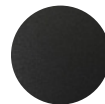
喷砂银白
Sandblasting Silver



喷砂黑色
Sandblasting Black



喷砂铁灰
Sandblasting Gray



喷砂黑色
Sandblasting Black



喷砂黑色
Sandblasting Black



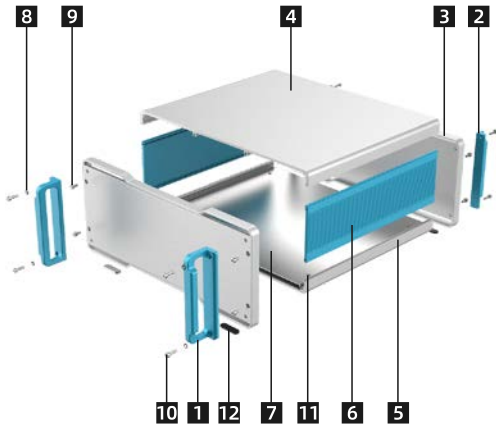
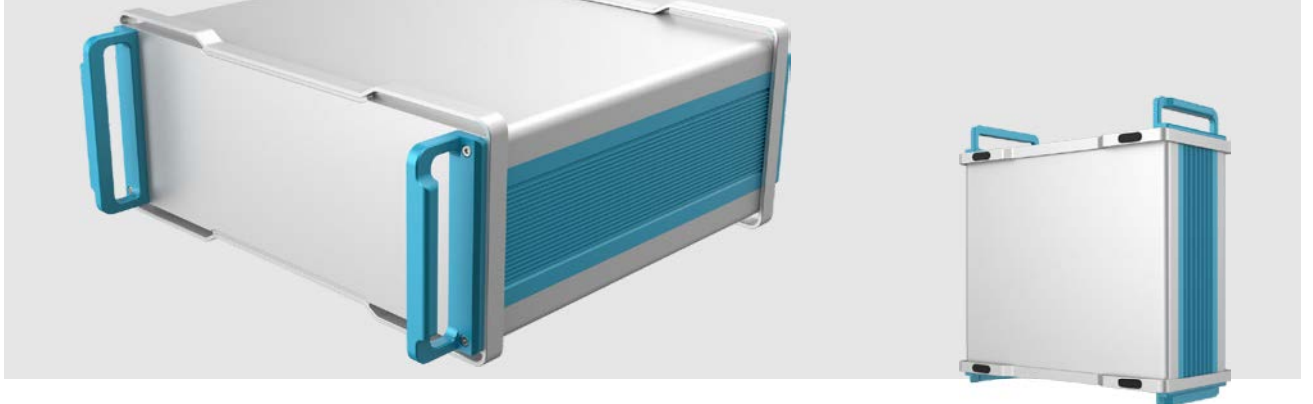
喷砂金黄
Sandblasting Golden



www.yg-enclosure.com/ www.yonggu-enclosure.com
广东永固电子机械科技有限公司
Guangdong YONGU Electronic Machinery Technology Co., Ltd.
✉️ ducati@yonggu-enclosure.com
📍 生产中心: 广东省江门市鹤城镇鹤翔中路32号 (自编14座)
No. 32, Hexiang Middle Road, Hecheng Town, Jiangmen City, Guangdong Province (14 self-edited)
总部: 广东省佛山市南海区大沥镇岭南南路75号伟业国际大厦
24th Floor, Weiye International Building, NO.75 Lingnan Road, Dali Town, Nanhai District, Foshan City, Guangdong Province, China

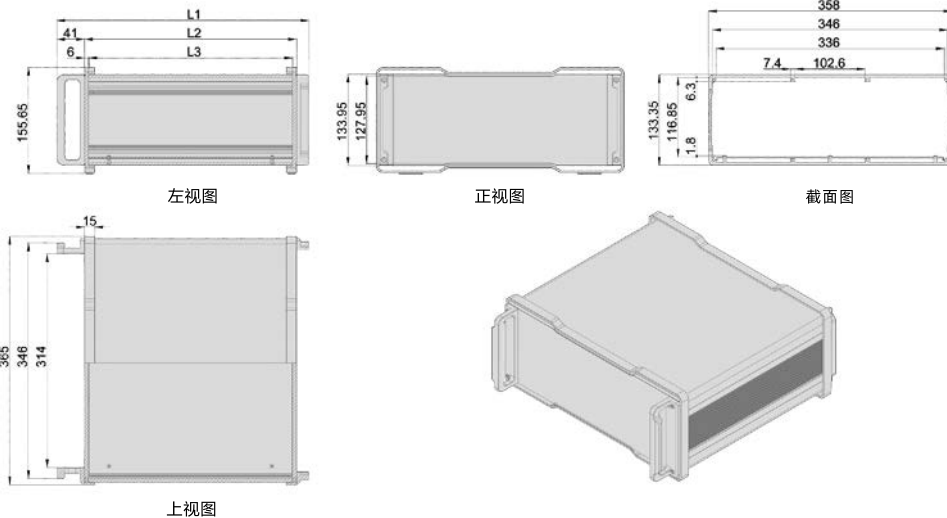


● YG-F07



- 加厚后面板，可定制性强
Thicken front and rear panel, widely customization
- 模块化设计、高度、深度可灵活定制
Modular design, height and depth can be flexibly customized
- 结构简单，安装便捷
Simple structure and convenient installation
- 铝合金把手设计，坚固可靠，方便携带
Aluminum alloy handle design, sturdy and reliable, easy to carry
- 铝合金护脚设计，防磕碰
Aluminum alloy foot protection design to prevent bumps
- 底部采用防滑硅胶脚垫
Non-slip silicone feet at the bottom

序号 S/N	组件 Description	数量 pcs	材料 Material	颜色/表面处理 Color / Finish
1	拉手 Handle	2	AL 5052-H32	喷砂翠蓝 Sandblasting Light Blue
2	后防护条 Rear Protecting Part	2	AL 5052-H32	喷砂翠蓝 Sandblasting Light Blue
3	前后面板 Front/Rear Panel	2	AL 5052-H32	喷砂银白 Sandblasting Silver
4	上盖板 Upper cover	1	AL 6063-T5	喷砂银白 Sandblasting Silver
5	下盖板 Bottom Cover	1	AL 6063-T5	喷砂银白 Sandblasting Silver
6	侧板 Side Panel	2	AL 6063-T5	喷砂翠蓝 Sandblasting Light Blue
7	垫板 Fixing Panel	1	AL 5052-H32	/
8	防松垫圈 M4 Check washer M4	4	SUS 304	/
9	内六角杯头螺丝 M4X8	8	SUS 304	/
10	内六角杯头螺丝 M4X14	8	SUS 304	/
11	十字大扁头螺丝 M3X4	6	碳钢 Carbon steel	镀白镍 White nickel plating
12	自粘胶垫 Rubber Pad	4	硅橡胶 Silicone rubber	黑色 Black



型号 S/N	L1	L2	L3	重量/KG
F07-0001	371	312	300	5.957
F07-0003	521	462	450	7.837

● DETGAILS 细节展示



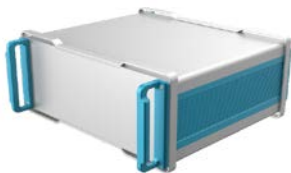
各面板开孔自由定制
Free customization of each panel cutouts

拱桥元素机脚设计，优雅与实用兼备
Arch bridge element machine foot design, elegant and practical



开孔定制，激光打标，定制丝印
Customization: cutouts, laser printing and silkscreen

● COLORING SCHEME 配色方案



(备货颜色 Stock color)



喷砂银白
Sandblasting Silver



喷砂翠蓝
Sandblasting Light Blue



喷砂银白
Sandblasting Silver



喷砂黑色
Sandblasting Black



喷砂铁灰
Sandblasting Gray



喷砂黑色
Sandblasting Black



喷砂黑色
Sandblasting Black



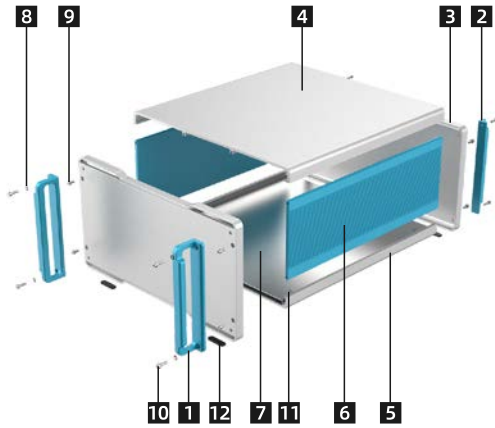
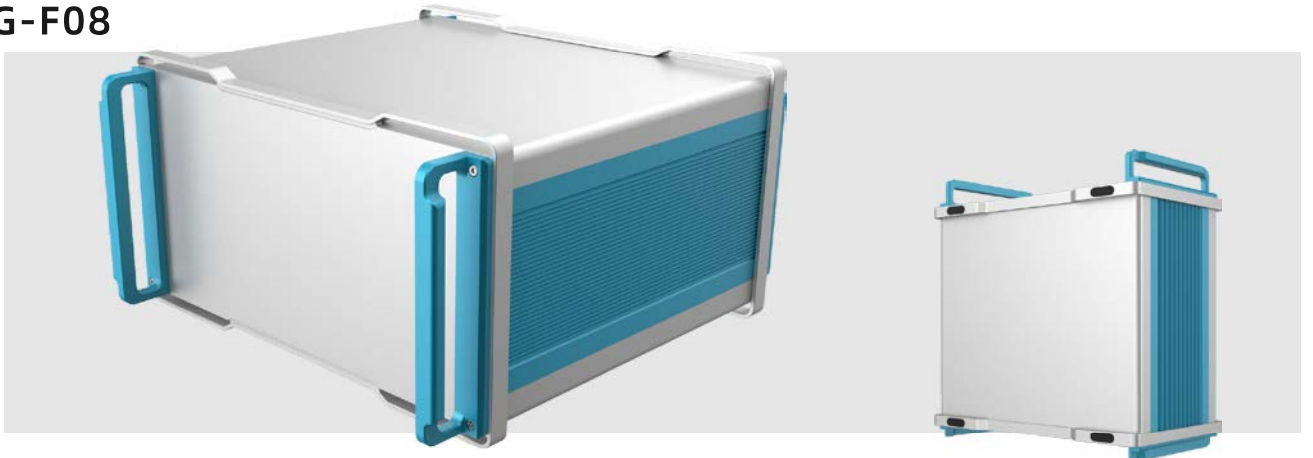
喷砂金黄
Sandblasting Golden



www.yg-enclosure.com/ www.yonggu-enclosure.com
广东永锢电子机械科技有限公司
Guangdong YONGU Electronic Machinery Technology Co., Ltd.
✉️ ducati@yonggu-enclosure.com
🏭 生产中心: 广东省江门市鹤城镇鹤翔中路32号 (自编14座)
No. 32, Hexiang Middle Road, Hecheng Town, Jiangmen City,
Guangdong Province (14 self-edited)
🏢 总部: 广东省佛山市南海区大沥镇岭南南路75号伟业国际大厦
24th Floor, Weiye International Building, NO.75 Lingnan Road,
Dali Town, Nanhai District, Foshan City, Guangdong Province, China

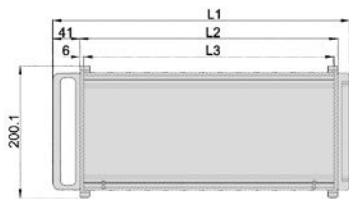


● YG-F08

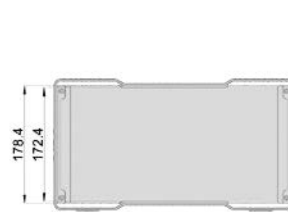


- 加厚后面板，可定制性强
Thicken front and rear panel, widely customization
- 模块化设计、高度、深度可灵活定制
Modular design, height and depth can be flexibly customized
- 结构简单，安装便捷
Simple structure and convenient installation
- 铝合金把手设计，坚固可靠，方便携带
Aluminum alloy handle design, sturdy and reliable, easy to carry
- 铝合金护脚设计，防磕碰
Aluminum alloy foot protection design to prevent bumps
- 底部采用防滑硅胶脚垫
Non-slip silicone feet at the bottom

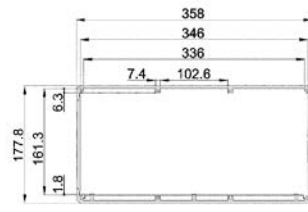
序号 S/N	组件 Description	数量 pcs	材料 Material	颜色/表面处理 Color / Finish
1	拉手Handle	2	AL 5052-H32	喷砂翠蓝Sandblasting Light Blue
2	后防护条Rear Protecting Part	2	AL 5052-H32	喷砂翠蓝Sandblasting Light Blue
3	前后面板Front/ Rear Panel	2	AL 5052-H32	喷砂银白Sandblasting Silver
4	上盖板Upper cover	1	AL 6063-T5	喷砂银白Sandblasting Silver
5	下盖板Bottom Cover	1	AL 6063-T5	喷砂银白Sandblasting Silver
6	侧板Side Panel	2	AL 6063-T5	喷砂翠蓝Sandblasting Light Blue
7	垫板Fixing Panel	1	AL 5052-H32	/
8	防松垫圈M4Check washerM4	4	SUS 304	/
9	内六角杯头螺丝M4X8 Hexagon socket head cap screwsM4X8	8	SUS 304	/
10	内六角杯头螺丝M4X14 Hexagon socket head cap screwsM4X14	8	SUS 304	/
11	十字大扁头螺丝M3X4 Crosss Recessed Mushroom ScrewsM3X4	6	碳钢Carbon steel	镀白镍White nickel plating
12	自粘胶垫Rubber Pad	4	硅胶Silicone rubber	黑色Black



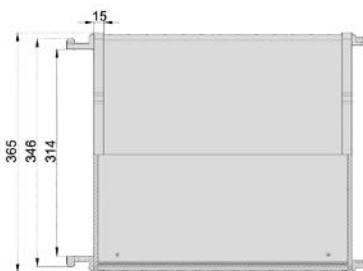
左视图



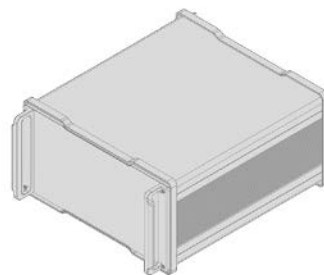
正视图



截面图



上视图



型号S/N	L1	L2	L3	重量/KG
F08-0005	451	392	380	8.375

● DETGAILS 细节展示



各面板开孔自由定制
Free customization of each panel cutouts

拱桥元素机脚设计，优雅与实用兼备
Arch bridge element machine foot design, elegant and practical



开孔定制，激光打标，定制丝印
Customization: cutouts, laser printing and silkscreen

● COLORING SCHEME 配色方案



(备货颜色 Stock color)



喷砂银白
Sandblasting Silver



喷砂翠蓝
Sandblasting Light Blue



喷砂银白
Sandblasting Silver



喷砂黑色
Sandblasting Black



喷砂铁灰
Sandblasting Gray



喷砂黑色
Sandblasting Black



喷砂黑色
Sandblasting Black



喷砂金黄
Sandblasting Golden



www.yg-enclosure.com/ www.yonggu-enclosure.com
广东永锢电子机械科技有限公司
Guangdong YONGU Electronic Machinery Technology Co., Ltd.
✉️ ducati@yonggu-enclosure.com
📍 生产中心: 广东省江门市鹤城镇鹤翔中路32号 (自编14座)
No. 32, Hexiang Middle Road, Hecheng Town, Jiangmen City,
Guangdong Province (14 self-edited)
总部: 广东省佛山市南海区大沥镇岭南路75号伟业国际大厦
24th Floor, Weiyi International Building, NO.75 Lingnan Road,
Dali Town, Nanhai District, Foshan City, Guangdong Province, China